








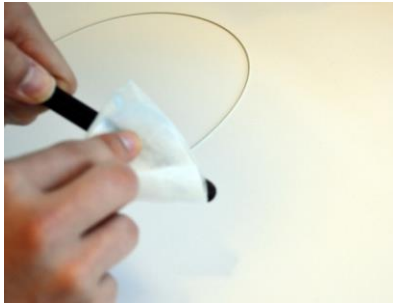


► InVue Parts List for Microsoft Surface Pro 7+ / 9

ORDER CODE & DESCRIPTION	ORDER CODE & DESCRIPTION
 <p>DKTR702-G ** S2865 EXPOSED CABLE QUICK CONNECT GREY</p>	 <p>DKGU01-B ** Alarm Unit Box Black & White IR Dot Gold LED</p>
 <p>DKTR810-G ** S2865 SURFACE PRO 7/7+/8/X TYPE C DUAL W/Keyboard</p>	 <p>PS512-US ** 5.3V MICRO USB POWER SUPPLY - US</p>
 <p>ZA2985-G ** S2865 MECH TETHER SURFACE SLIM PEN</p>	 <p>DBG400 ** LOCKDOWN TOOL, 4 pack</p>
 <p>DKPB02-B ** Small Power Box 2-port Black</p>	 <p>100639293 Laptop AOP (Alarm on Product) ZL1000-W</p>
 <p>PS24V65-US ** 24V/5A PWR SUPPLY</p>	<p>**These items will not be available to order through GNFR.</p>

ZA2985 Stylus Guide (1 per store)

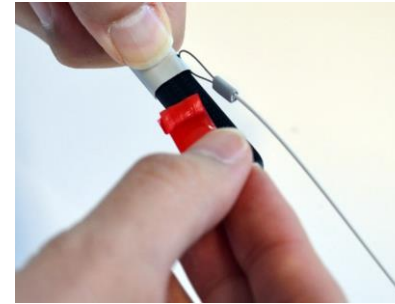
Non GNFR items



- 1 Use the provided alcohol wipe to clean the stylus. Allow to dry completely.



- 2 Slide the tether over the stylus as shown.



- 3 Pull the red tab from the tether to expose the adhesive.



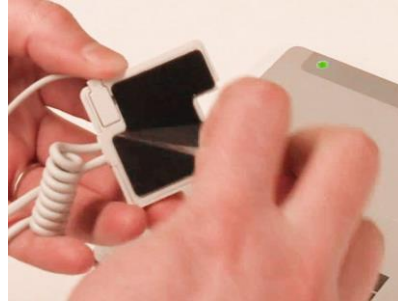
- 4 Press the tether against the stylus for at least 10 seconds.



- 5 Plug the stylus tether into the underside of the sensor sled. (DKTR810-G)



- 1 Use the provided alcohol wipe to clean the back of the tablet being displayed. Allow to dry completely.



- 2 Peel the clear film from the adhesive.



- 3 Place the sensor into the tablet (not on the kickstand) and apply pressure for at least 10 seconds



- 4 Plug the sensor into the tablet.



- 5 Place the stylus onto the tablet.



- 6 With the tablet open, slide the bar part of the keyboard sensor onto the keyboard. Make sure that the countersinks on the bar are facing down.



- 7 Insert the smaller provided screw onto the innermost hole on the bar. Use the small provided screwdriver to tighten the screw.



- 8 Place the keyboard sensor onto the bar. Make sure that the hole aligns with the one on the end of the bar.

DKTR810-G and DKTR702-B Guide

Non GNFR items



- 9 Insert the longer screw through the hole in the sensor and tighten with the small screwdriver.



- 10 Slide the quick connect sensor (DKTR702-G) onto the tablet sensor, it will click into place.



- 11 Plug the quick connect sensor into the DKPB02-B Power Box.



- 12 See the diagram on page 5 for setting up the under-counter alarm and power units.



REMOVAL- place a DBG400 magnet key onto the back of the quick connect sensor. Slide the quick connect sensor out of the tablet sensor.

DKTR810-G and DKTR702-B Guide

Non GNFR items

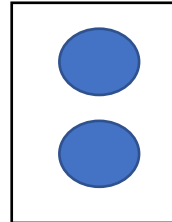
- 1 Unbag the DKGU01-B Alarm unit and PS512-US. Plug the IR Dot and power supply into the labeled ports.



- 2 Unbag the DKPB02-B Power Box and Ethernet Cable. Plug into **OUT** port on the Alarm unit, and the **IN** port on the Power Box. Unbag the PS24V65-US Power Supply and plug into the labeled port.



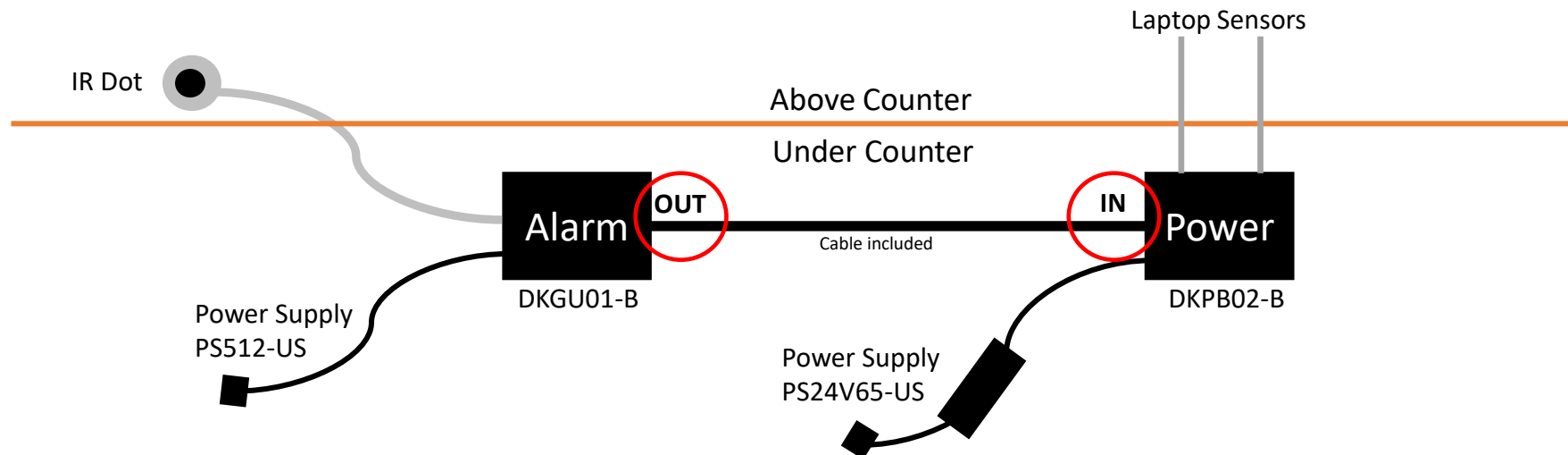
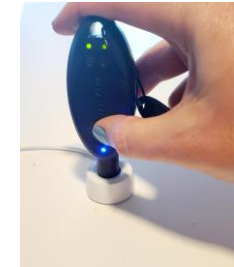
- 3 Plug both Power supplies into AC Power.



- 4 Route the IR Dot above counter and adhesive to the countertop. This IR Dot will be used to disarm the Alarm.

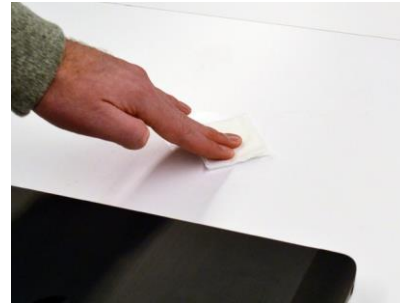


- 5 Take a Programmed IR Key and Program the IR Dot by placing the key nose to the IR lenses and clicking the button on the key.

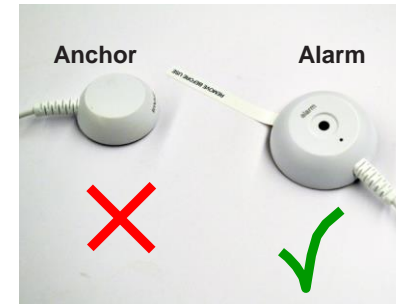




1 Use the provided alcohol wipe to clean the back of the laptop. Allow it to dry completely.



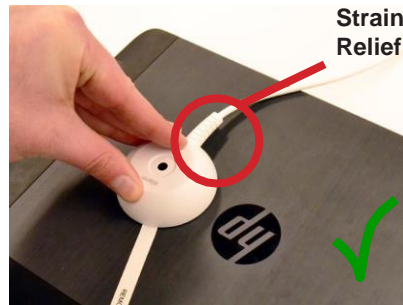
2 Use the provided alcohol wipe to clean the table surface behind where the laptop will be displayed. Allow it to dry completely.



3 Select the side of the unit with the IR dot and labeled "alarm".



4 Peel the clear film from the adhesive on the alarm side of the unit.



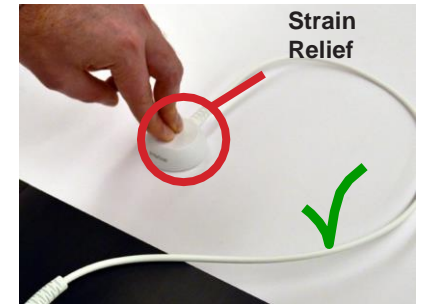
5a Place the alarm side onto the back of the laptop. Make sure the strain relief on the cable is clear of the laptop hinge. Apply pressure for 10 seconds.



5b Do **NOT** place the strain relief near the laptop hinge.



6 Peel the clear film from the adhesive on the anchor side of the unit.



7 Make sure the strain relief on the anchor is facing AWAY from laptop. This will prevent the cable from getting caught under the laptop. Place the anchor behind the laptop and apply pressure for 10 seconds.