

Chemical susceptibility test on the NE360 family of products.



PURPOSE

To test the chemical susceptibility of all the NE360 family of products when cleaning agents are applied.

PROCESS

Clean the plastic, buttons, and gold contact areas with various cleaning agents and inspect all areas to identify any possible damage caused by the chemicals. All devices were functioning properly without any surface damage prior to testing.

TEST PRODUCTS

- › CT3127 NE360H Cover Case (Qty: 20)
- › Zebra TC5x w/ Zebra Rugged Cover Case for BFT verify charging data (Qty: 1 each)

RESULTS SUMMARY

Chemical susceptibility test of NE360 cover case found significant electrical contact corrosion when Clorox Healthcare Bleach Germicidal Wipes were used to clean the device, however the plastic components showed no wear. All devices were functioning after the chemical test.

NE360 Cleaning Guidelines

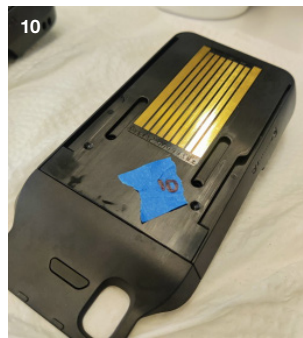
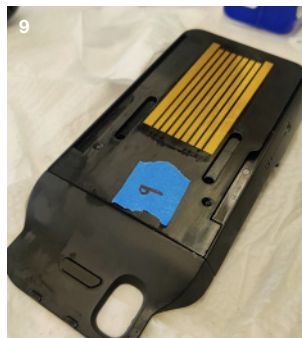
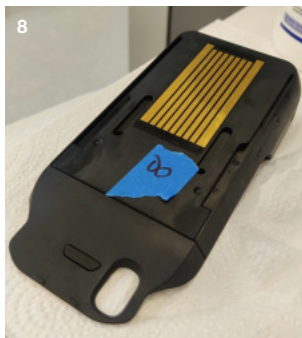
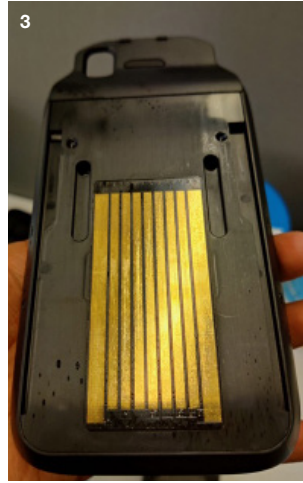
TEST RESULTS

Test ID#	Cleaning Product	Pass / Fail
1	Care Touch Alcohol Prep Pads 70%	Pass
2	Clorox Disinfecting Wipes, Crisp Lemon	Pass
3	Clorox Disinfectant Wipes, Citrus Blend	Pass
4	Clorox Disinfectant Wipes, Fresh Scent	Pass
5	Clorox Healthcare Bleach Germicidal Wipes	Fail*
6	Clorox Healthcare Hydrogen Peroxide Cleaner Disinfectant Wipes	Pass
7	Clorox Healthcare VersaSure Alcohol-Free Cleaner Disinfectant Wipes	Pass
8	Diversey Oxivir Tb Wipes	Pass
9	Diversey Virex Disinfectant Cleaner	Pass
10	Metrex Caviwipes	Pass
11	Metrex Caviwipes1	Pass
12	PDI Antimicrobial Hand Sanitizing Wipes	Pass
13	PDI Sani-Cloth AF3 Germicidal Disposable Wipes	Pass
14	PDI Sani-Cloth Bleach	Pass
15	PDI Sani-Cloth Plus Germicidal Disposable Cloths	Pass
16	PDI Super Sani-Cloth Germicidal Disposable Wipes	Pass
17	PDI Sani-Wipe Non-Rinse Food Contact Hard-Surface Sanitizing Wipe	Pass
18	Simple Green	Pass
19	Windex Glass Cleaner with Ammonia-D	Pass

* Notable damage to gold contacts on case occurred with ID# 5. Clorox Healthcare Bleach Germicidal Wipes caused spots to form on the rear contact pads. All other locations were normal.

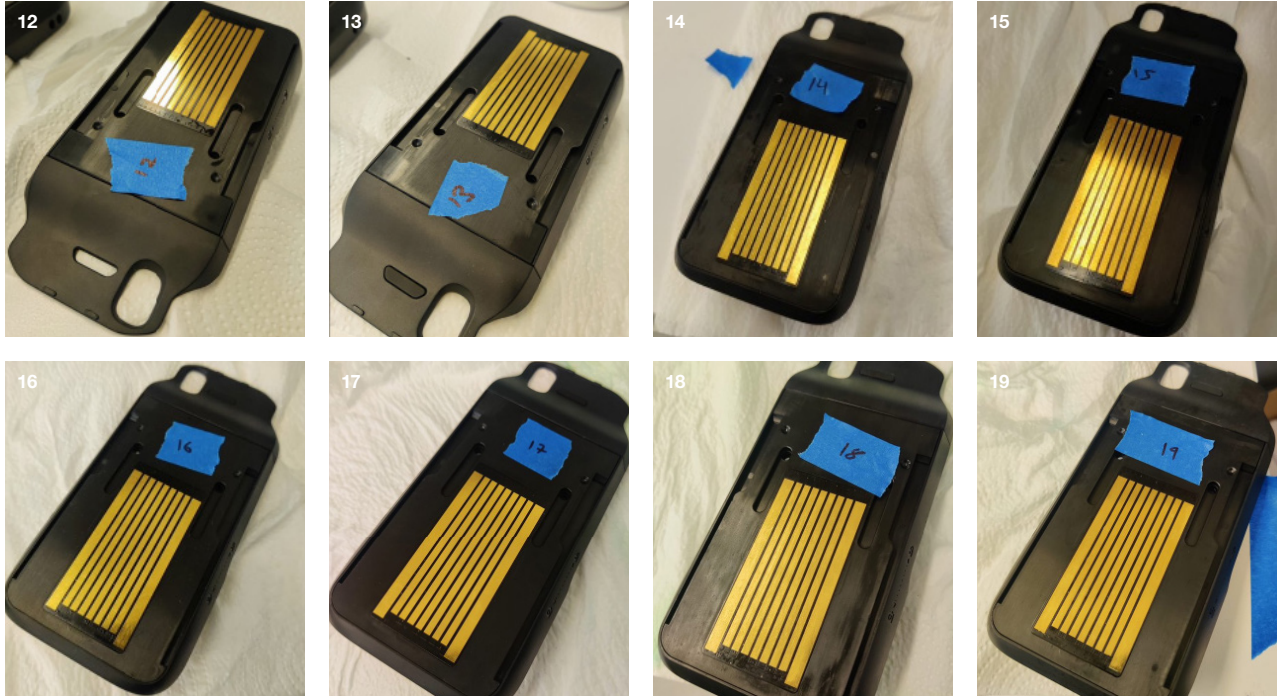
NE360 Cleaning Guidelines

TEST RESULT PHOTOS



NE360 Cleaning Guidelines

TEST RESULT PHOTOS



RECOMMENDED CLEANING INSTRUCTIONS

Apply cleaning solution to a soft cloth or wipe, and clean the device* as needed.

Do not directly apply cleaning solution to the device.

*We do not recommend cleaning the electrical contacts (pogo pins, pogo pin contacts) on the payment center tablet adapter with any chemical cleaner. Corrosion may occur.