

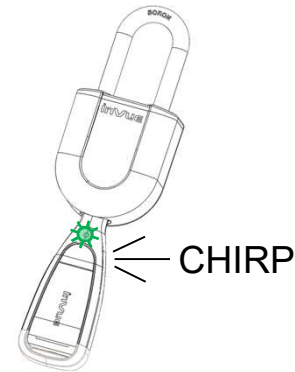
IR Padlock – De-Icing Procedure



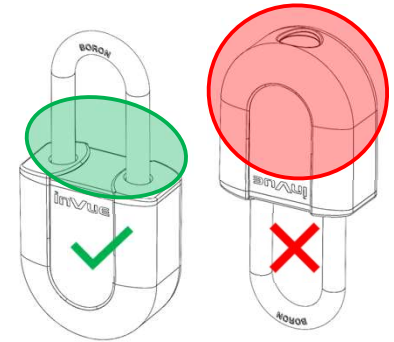
1 CAUTION – When working with a heat gun follow all heat gun manufacturer recommended safety instructions. InVue is not responsible for damage or injury caused by heat gun usage.



2 Iced shackle condition – if the temperature is below freezing and key interaction with the lock is normal (green LED and chirp sound) but the shackle will not open it may be that ice has frozen the shackle. This condition may be eliminated by applying targeted heat to the shackle area per the following procedure.



3 Operate the padlock as normal confirming that the LED on the key turns green and makes a chirp to indicate that the lock mechanism has successfully unlocked.

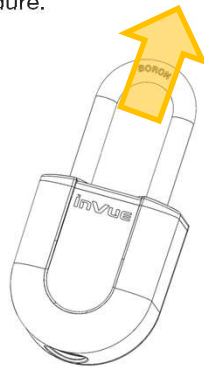


4 Using a heat gun apply heat only to the base of the shackle, concentrating on the areas highlighted. Do not apply heat to other areas of the lock – doing so may cause damage to the internal electronics.

CAUTION – the surface of the lock body and shackle may get hot.



5 Continue to apply heat until any built-up ice has melted, then continue to apply heat for an additional 1 minute.



6 Remove heat and attempt to pull the shackle. If the shackle is still frozen, tapping it with a plastic hammer or screw driver handle may help unstick it.



7 If needed heat the shackle again for an additional 1 minute, do not exceed a total of 5 minutes of applied heat. Doing so may damage the internal electronics.