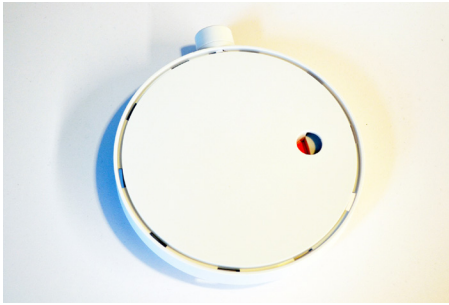


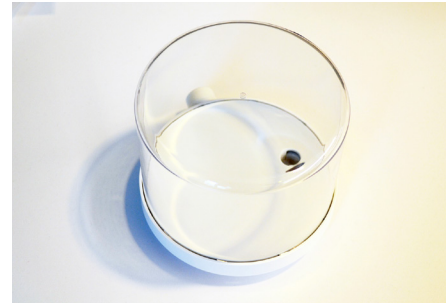
Zips Display Case Anti-Rotation Clip ZC1940



- 1 Place the ZC1901 plate onto the base so that the orange alignment indicator is visible through the hole in the plate.



- 2 Slightly rotate the plate clockwise to lock it into place on the base.



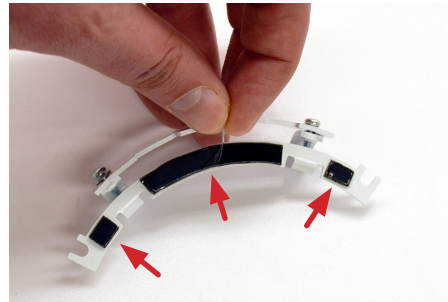
- 3 Align the tabs on the cover with the gaps in the plate.
Note: Place the display item on the plate before hand.



- 4 Rotate the cover into the locked position.



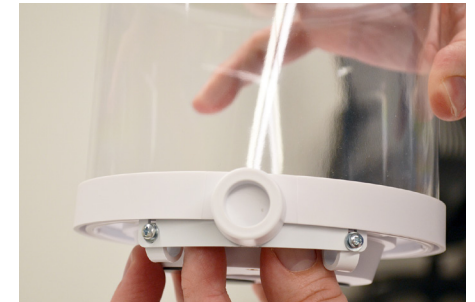
- 5 Use an alcohol wipe to clean the inside track on the bottom of the display plate near the IR lens. Allow it to dry completely.



- 6 Peel the clear film from the 3 adhesives on the anti-rotation clip.

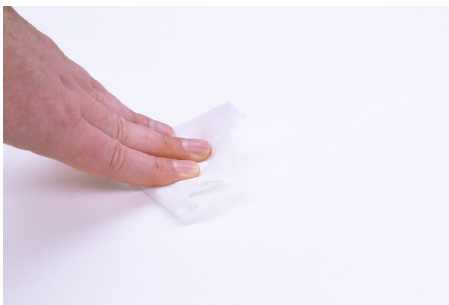


- 7 Center the clip beneath the IR lens so that the slots on the clip fit around the lens. Align the slots on the clip with the posts on the bottom of the Zips IoT Base.



- 8 Press the clip against the bottom of the Zips IoT base for at least 10 seconds.

Zips Display Case Anti-Rotation Clip ZC1940



- 9 Use the alcohol wipe included with the Zips IoT base to clean the area where it will be placed. Allow the area to dry completely.



- 10 Peel the clear film from the 4 adhesives.



- 11 Place the Zips Display Case where desired and apply pressure for at least 10 seconds.
Note: Consult the instructions included with the ZC1901 Zips Display Case for complete installation information.



- 12 To allow for the cap and/or the display plate to be removed from the base, loosen the 2 screws and slide the clip down.



- 13 To secure all parts, push the clip up against the base and tighten the screws.