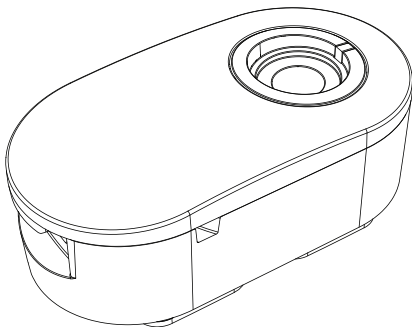




Zips! 2.0

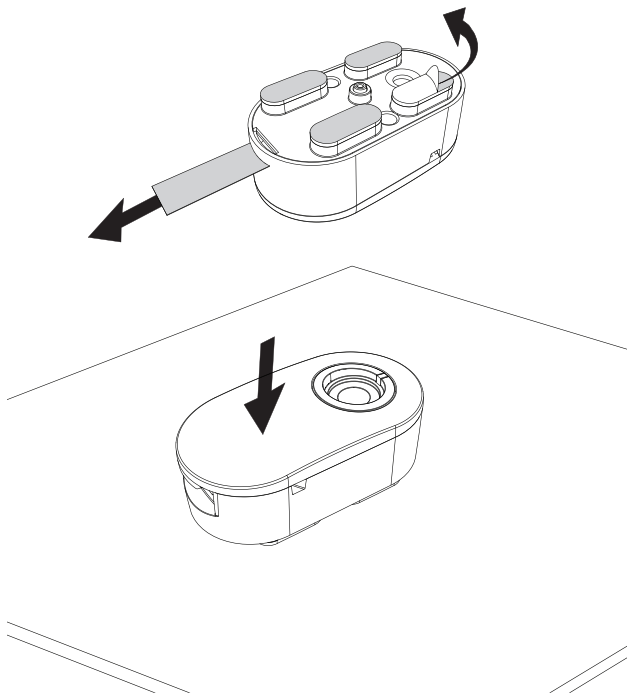
1-Port Alarm Unit
ZA2600, ZA2602



- 1** Wipe fixture with alcohol wipe provided. **Let it dry completely.**

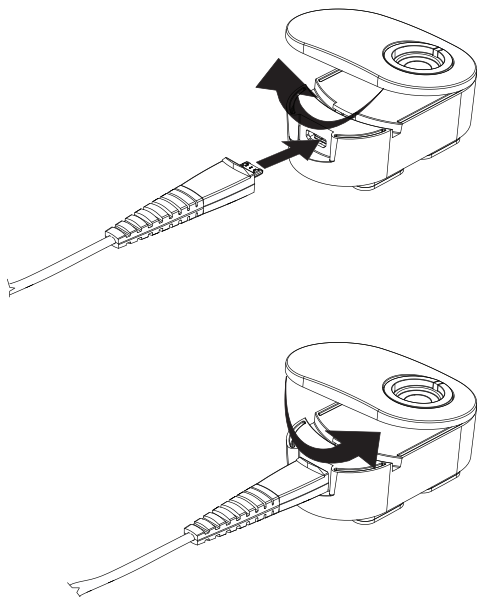


- 2** Remove tab to activate battery. Remove clear film from adhesive. Press firmly onto fixture for at least 10 seconds.



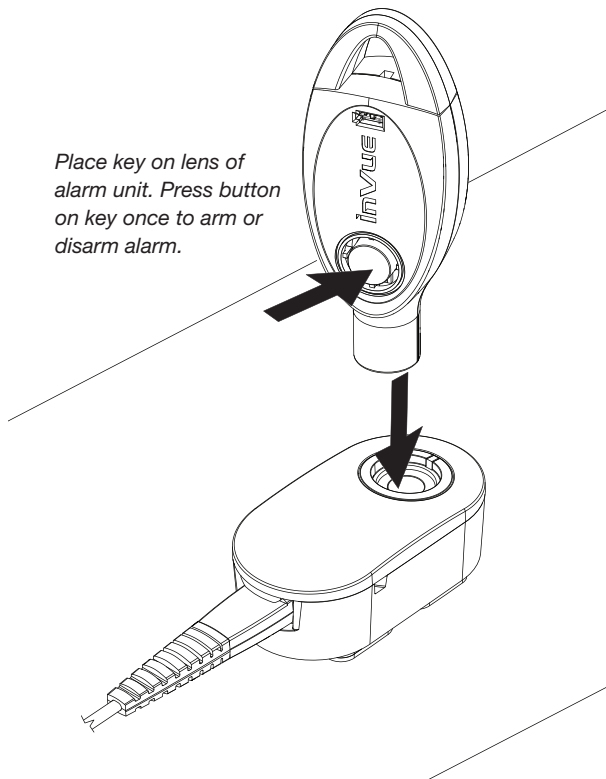
3

Open alarm unit door. Firmly plug sensor into alarm unit (you will hear a “chirp” if merchandise is attached to the sensor) and close door.



Arm/Disarm Alarm

Place key on lens of alarm unit. Press button on key once to arm or disarm alarm.





tough security made easy

www.invuesecurity.com

NA / LATAM OFFICE // 704.752.6513 • 888.55.INVUE

EMEA OFFICE // +31.23.8900150

APAC OFFICE // +852.3127.6811

© 2014 InVue Security Products Inc. All rights reserved.
InVue is a registered trademark of InVue Security Products.