



**DQP100-W:** MagStand Universal Base



**DQP200-W:** Charge Head



**DQP300-W:** Handheld Sensor



**DQP400:** Alignment Tool



**ADH2300:** Polish Kit



**ADH2333:** LSE Plate Kit



**PS520:** USB-C Power Supply



**PS552:** Qi2 Charger

## MagStand - Handheld Installation

### Device Preparation:



- 1** Place the Alignment Tool (DQP400) onto the back of the device.  
The Alignment Tool contains a magnet to help center it with the magnet in the device.



- 2** Center the Alignment Tool on the back of the device.



- 3** Flip down the bottom of the Alignment Tool.



- 4** Open the polish compound packet from the polish kit (ADH2300).



- 5** Place a drop of the polishing compound onto the back of the device.



- 6** Remove the Alignment Tool and use the cloth included in the kit to rub the polish compound onto the device.



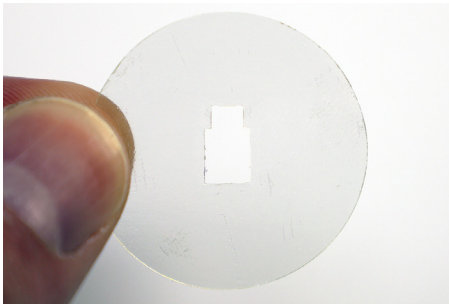
- 7** Use a clean portion of the cloth to buff out any of the left over polish compound.  
**Note:** A visual difference may not be apparent.

### Optional LSE (ADH2333) Usage:

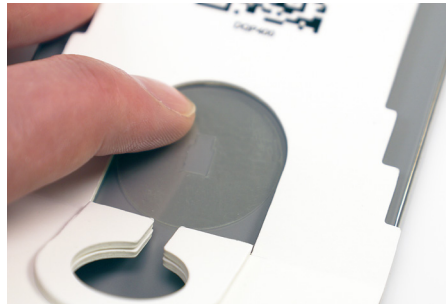


- 8a** Remove one of the clear LSE plates from the LSE adhesive kit (ADH2333).

## MagStand - Handheld Installation



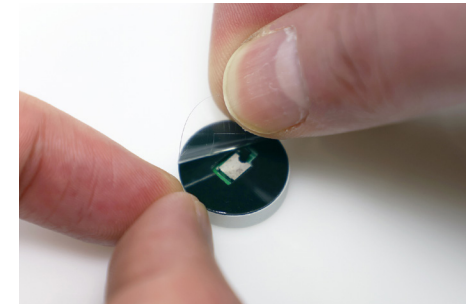
- 8b** Orient the LSE plate so that the narrow side will be facing up as shown.



- 8c** Replace and realign the Alignment Tool and place the LSE plate into the opening. Smooth the LSE plate into place.



- 9** Flip the bottom of the Alignment Tool back up as shown.



- 10** Peel the clear film from the adhesive on the Handheld sensor.



- 11** Place the sensor into the opening on the Alignment Tool as shown.



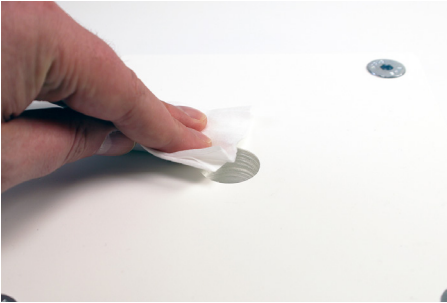
- 12** Apply pressure for at least 10 seconds.



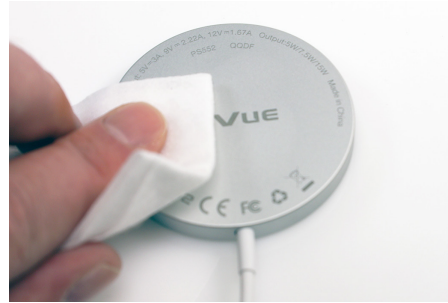
- 13** Device assembly should resemble the image above.

## MagStand - Handheld Installation

### Stand Installation:



- 14** Use the provided alcohol wipe to clean the surface where the stand (DQP100) will be placed. Allow it to dry completely.



- 15** Use the provided alcohol wipe to clean the back (the gray side with the print) of the Qi2 Charger (PS552). Allow it to dry completely.



- 16** Route the USB-C end of the charger cable through the opening in the charge head (DQP200).



- 17** Place the charge head onto the stand.



- 18** Slide the gray screw cover to reveal the screw holes.



- 19** Insert the small provided screw into the screw holes and use a TT10 bit to tighten the screw.



- 20** Slide the cover back into place over the screw.



- 21** Peel the clear film from the 3 small adhesives on the inside of the charge head.



## MagStand - Handheld Installation



**22** Route the charger's cable down into the charge head, ensuring that the cable exits along the channel circled above.



**23** Fit the Qi2 charger into the charge head and press it against the adhesives for at least 10 seconds.



**24** Route the cable end down through the hole in the stand.



**25a** Route the cable down into the channel on the back of the stem.



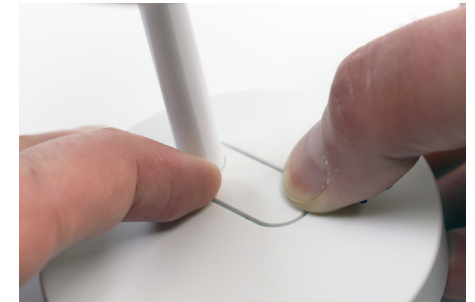
**25b** Ensure that the cable exits out through the hole at the bottom of the stem.



**26a** Identify the bottom of the stem cover by finding the side with the mark shown above.

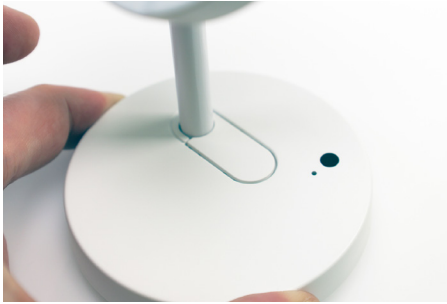


**26b** Snap the stem cover into place.



**27a** Snap the base cover into place.

## MagStand - Handheld Installation



**27b** The final assembly should resemble the image above.



**28a Optional:**  
The cable can be routed through a hole or slot in a fixture.



**28b** If the cable will be run along the surface, the cable should exit out through the channel in the bottom of the stand.



**29** Peel the clear film from the 3 adhesives on the bottom of the stand.



**30a** When placing the stand on the fixture, the small tab feature on the front of the stand can be used to help align the stand.



**30b** Place the stand where desired and apply pressure for at least 10 seconds.



**31** Plug the sensor cable into the port on the back of the stand.



**32** Place the device and sensor onto the charger/charge head.  
**Note:** The sensor will fit into the depression on the charge head.

## MagStand - Handheld Installation



- 33** Plug the charger cable into the PS520 power supply. Plug the power supply into a power outlet.  
**Note:** The LED on the base will blink once when power is applied.



- 34** Place a charged and coded OneKEY onto the IR lens in the base of the stand. Press the button on the OneKEY to code the position. The system will chirp and the LED will flash in confirmation.



- 35** Final assembly should resemble the above image.

### Battery Replacement & Demerchandising:



- 1** Place a charged and coded OneKEY onto the IR lens in the base of the stand. Press the button on the OneKEY to disarm the position.



- 2** Unplug the power supply from the power outlet.



- 3** Unplug the sensor cable from the back of the stand and remove the device and sensor from the charge head.



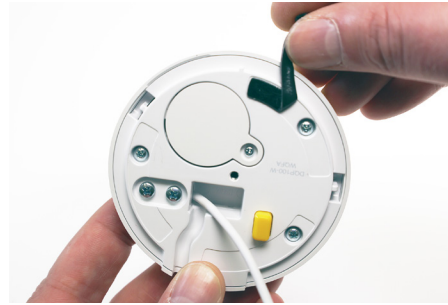
- 4 Optional:** If the position will be remerchandised with a different device, use the DNTX93 removal tool to break the the adhesive bond of the sensor. The LSE plate can be peeled off. Replacement Sensor Adhesives are in the ADH2339 kit.



## MagStand - Handheld Installation



- 5 Use the DNTX93 removal tool 2 break the adhesive bonds of the 3 adhesives on the bottom of the stand.



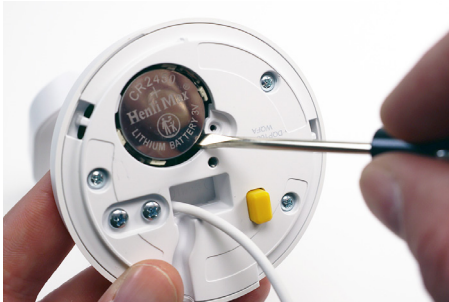
- 6 Remove the old adhesives from the bottom of the stand.



- 7 Use a small screwdriver to loosen the screw on the battery panel.



- 8 Remove the battery panel.



- 9 Use a small tool to remove the old battery from the stand.



- 10 **IMPORTANT!**  
Wait 60 seconds before installing a new battery. The stand needs to cycle through any residual charge or it will continue to think that the old battery is still present.



- 11 Install a new CR2450 battery. Ensure that the print side is facing out as shown.



- 12 Replace the battery panel.



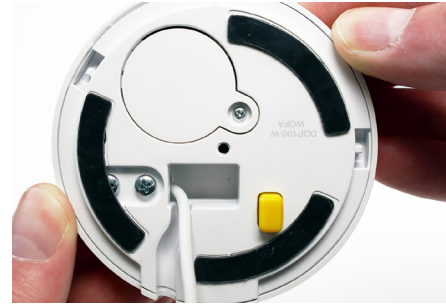
## MagStand - Handheld Installation



- 13 Use a small screwdriver to tighten the screw on the battery panel.



- 14 Use the alcohol wipe included in the stand replacement adhesive kit (ADH2338). Allow it to dry completely.



- 15 Remove 3 of the replacement adhesives from their backing and place into the depressions on the bottom of the stand. Smooth the adhesives into place for at least 10 seconds. The stand is now ready to be reinstalled.

SD0996 Rev1 01/29/25