



DQP100-W: MagStand Universal Base



DQP200-W: Charge Head



DQP210-W: Charge Head for iPhone 16e



DQP400: Alignment Tool



DQP410: Alignment Tool for iPhone 16e



DQP300-W: Handheld Sensor



ADH2300: Polish Kit



ADH2333: LSE Plate Kit



PS520: USB-C Power Supply



PS552: Qi2 Charger

MagStand - Handheld Installation

Device Preparation (Standard iPhones):



- 1** Place the Alignment Tool (DQP400) onto the back of the device.
The Alignment Tool contains a magnet to help center it with the magnet in the device.



- 2** Center the Alignment Tool on the back of the device.



- 3** Flip down the bottom of the Alignment Tool.



- 4** Open the polish compound packet from the polish kit (ADH2300).



- 5** Place a drop of the polishing compound onto the back of the device.



- 6** Remove the Alignment Tool and use the cloth included in the kit to rub the polish compound onto the device.



- 7** Use a clean portion of the cloth to buff out any of the left over polish compound.
Note: A visual difference may not be apparent.



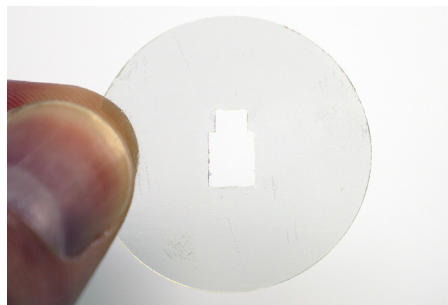
- 8** Use the provided alcohol wipe to clean the area. Allow it to dry completely.

MagStand - Handheld Installation

Optional LSE (ADH2333) Usage:



- 9a** Remove one of the clear LSE plates from the LSE adhesive kit (ADH2333).



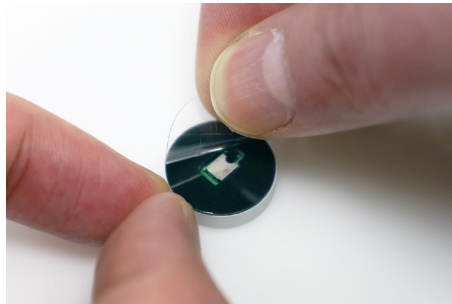
- 9b** Orient the LSE plate so that the narrow side will be facing up as shown.



- 9c** Replace and realign the Alignment Tool and place the LSE plate into the opening. Smooth the LSE plate into place.



- 10** Flip the bottom of the Alignment Tool back up as shown.



- 11** Peel the clear film from the adhesive on the Handheld sensor.



- 12** Place the sensor into the opening on the Alignment Tool as shown.



- 13** Apply pressure for at least 10 seconds.



- 14** Device assembly should resemble the image above.

MagStand - Handheld Installation

Device Preparation (iPhone 16e):



- 1 Place the Alignment Tool (DQP410) onto the back of the device. Ensure that the cutout on the Alignment Tool fits over the camera lens on the device.



- 2 Center the Alignment Tool on the back of the device.



- 3 Flip down the bottom of the Alignment Tool.



- 4 Open the polish compound packet from the polish kit (ADH2300).



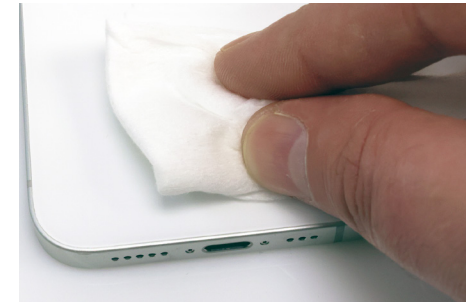
- 5 Place a drop of the polishing compound onto the back of the device.



- 6 Remove the Alignment Tool and use the cloth included in the kit to rub the polish compound onto the device.



- 7 Use a clean portion of the cloth to buff out any of the left over polish compound.
Note: A visual difference may not be apparent.



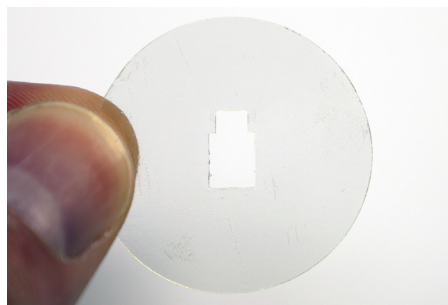
- 8 Use the provided alcohol wipe to clean the area. Allow it to dry completely.

MagStand - Handheld Installation

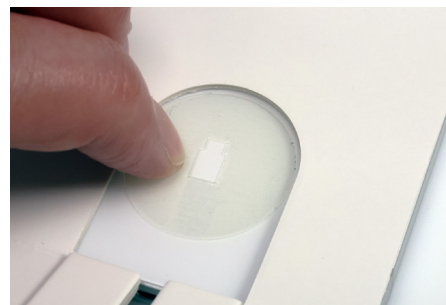
Optional LSE (ADH2333) Usage:



- 9a** Remove one of the clear LSE plates from the LSE adhesive kit (ADH2333).



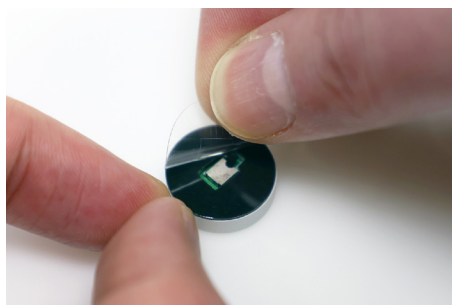
- 9b** Orient the LSE plate so that the narrow side will be facing up as shown.



- 9c** Replace and realign the Alignment Tool and place the LSE plate into the opening. Smooth the LSE plate into place.



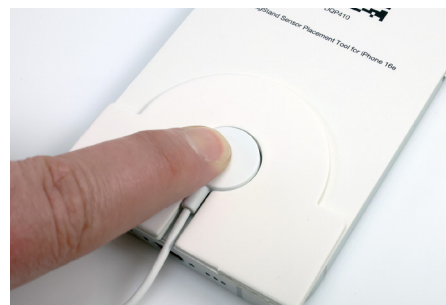
- 10** Flip the bottom of the Alignment Tool back up as shown.



- 11** Peel the clear film from the adhesive on the Handheld sensor.



- 12** Place the sensor into the opening on the Alignment Tool as shown.



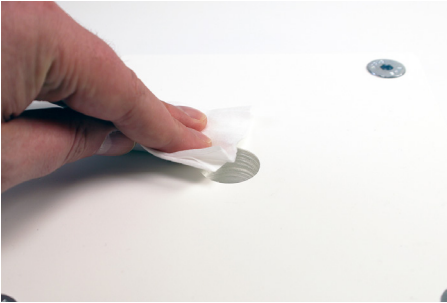
- 13** Apply pressure for at least 10 seconds.



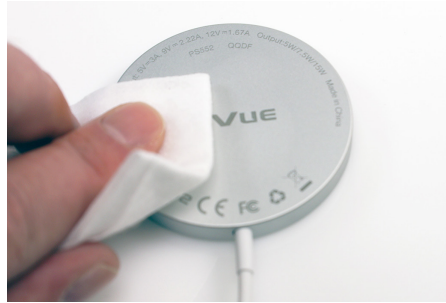
- 14** Device assembly should resemble the image above.

MagStand - Handheld Installation

Stand Installation:



- 15** Use the provided alcohol wipe to clean the surface where the stand (DQP100) will be placed. Allow it to dry completely.



- 16** Use the provided alcohol wipe to clean the back (the gray side with the print) of the Qi2 Charger (PS552). Allow it to dry completely.



- 17** Route the USB-C end of the charger cable through the opening in the charge head (DQP200 for standard iPhones or DQP210 for iPhone 16e).



- 18** Place the charge head onto the stand.



- 19** Slide the gray screw cover to reveal the screw holes.



- 20** Insert the small provided screw into the screw holes and use a TT10 bit to tighten the screw.

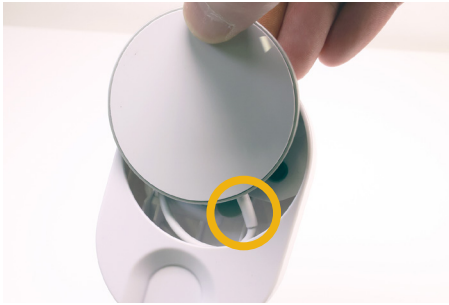


- 21** Slide the cover back into place over the screw.



- 22** Peel the clear film from the 3 small adhesives on the inside of the charge head.

MagStand - Handheld Installation



23 Insert the Qi2 charger into the charge head, ensuring that the strain relief is inserted at an angle as shown above.



24 Fit the Qi2 charger into the charge head and press it against the adhesives for at least 10 seconds.



25 Route the cable end down through the hole in the stand.



26a Route the cable down into the channel on the back of the stem.



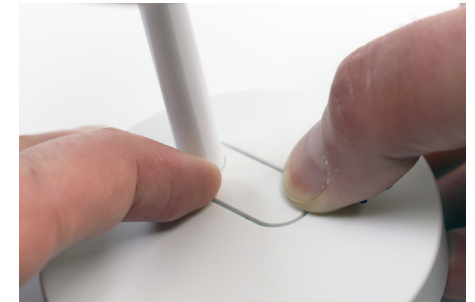
26b Ensure that the cable exits out through the hole at the bottom of the stem.



27a Identify the bottom of the stem cover by finding the side with the mark shown above.

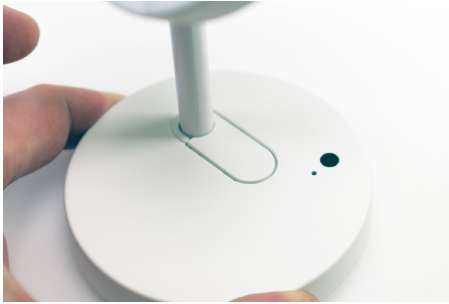


27b Snap the stem cover into place.



28a Snap the base cover into place.

MagStand - Handheld Installation



28b The final assembly should resemble the image above.



29a Optional:
The cable can be routed through a hole or slot in a fixture.



29b If the cable will be run along the surface, the cable should exit out through the channel in the bottom of the stand.



30 Peel the clear film from the 3 adhesives on the bottom of the stand.



31a When placing the stand on the fixture, the small tab feature on the front of the stand can be used to help align the stand.



31b Place the stand where desired and apply pressure for at least 10 seconds.



32 Plug the sensor cable into the port on the back of the stand.



33 Place the device and sensor onto the charger/charge head.
Note: The sensor will fit into the depression on the charge head.

MagStand - Handheld Installation



- 34** Plug the charger cable into the PS520 power supply. Plug the power supply into a power outlet.
Note: The LED on the base will blink once when power is applied.



- 35** Place a charged and coded OneKEY onto the IR lens in the base of the stand. Press the button on the OneKEY to code the position. The system will chirp and the LED will flash in confirmation.



- 36** Final assembly should resemble the above image.

Battery Replacement & Demerchandising:



- 1** Place a charged and coded OneKEY onto the IR lens in the base of the stand. Press the button on the OneKEY to disarm the position.



- 2** Unplug the power supply from the power outlet.



- 3** Unplug the sensor cable from the back of the stand and remove the device and sensor from the charge head.



- 4 Optional:** If the position will be remerchandised with a different device, use the DNTX93 removal tool to break the the adhesive bond of the sensor. The LSE plate can be peeled off. Replacement Sensor Adhesives are in the ADH2339 kit.

MagStand - Handheld Installation



- 5 Use the DNTX93 removal tool 2 break the adhesive bonds of the 3 adhesives on the bottom of the stand.



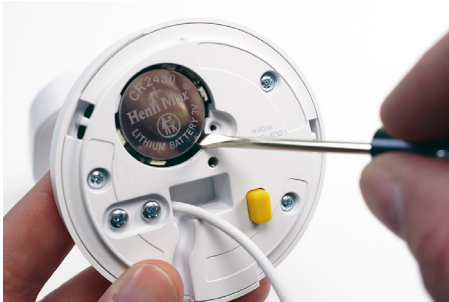
- 6 Remove the old adhesives from the bottom of the stand.



- 7 Use a small screwdriver to loosen the screw on the battery panel.



- 8 Remove the battery panel.



- 9 Use a small tool to remove the old battery from the stand.



- 10 **IMPORTANT!**
Wait 60 seconds before installing a new battery. The stand needs to cycle through any residual charge or it will continue to think that the old battery is still present.



- 11 Install a new CR2450 battery. Ensure that the print side is facing out as shown.



- 12 Replace the battery panel.

MagStand - Handheld Installation



- 13 Use a small screwdriver to tighten the screw on the battery panel.



- 14 Use the alcohol wipe included in the stand replacement adhesive kit (ADH2338). Allow it to dry completely.



- 15 Remove 3 of the replacement adhesives from their backing and place into the depressions on the bottom of the stand. Smooth the adhesives into place for at least 10 seconds. The stand is now ready to be reinstalled.

SD0996 Rev4 07/30/25